



Blackwater River State Forest Tour

Florida Forest Service
Santa Rosa County, Florida



Date: October 24, 2019

Location: Meet at the Bear Lake Pavilion off Bear Lake Road, Milton, FL (map and directions on back)

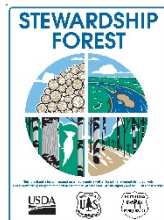
Registration begins at 8:15 AM Central Time

Adjourn at 12:45 PM Central Time (lunch provided)

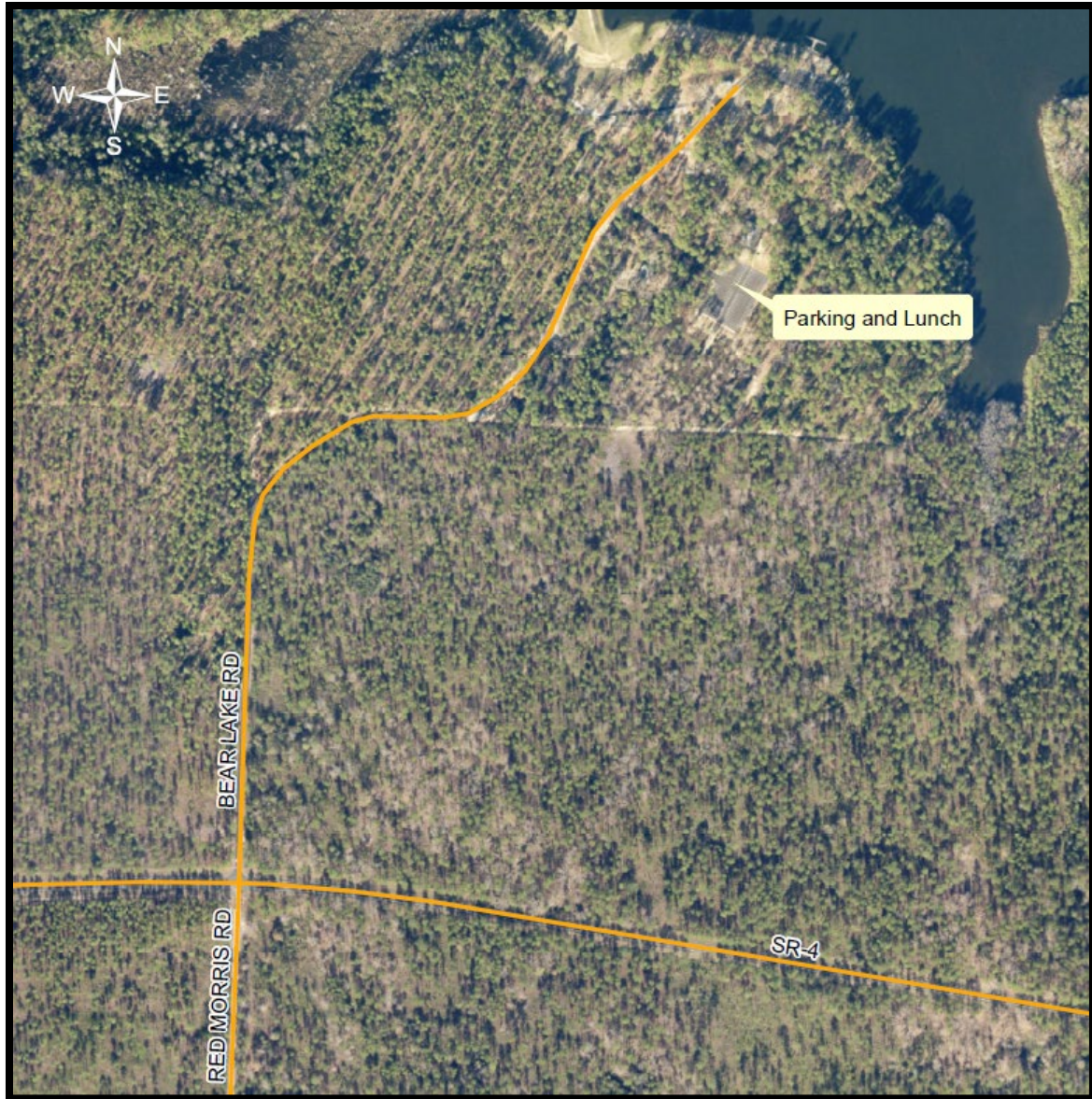
Join us for a tour on Blackwater River State Forest as we view different facets of this working forest. Stops along the way will include a demonstration of our sawmill and gristmill, the Seed Orchard processing facility, a timber stand improvement site, timber sale, and red-cockaded woodpecker cluster. Following the tour, lunch will be provided upon our return to Bear Lake.

This is a great opportunity to connect with the local Florida Forest Service personnel and learn about part of the forest's history and how the 211,100 acres it encompasses are managed. Most of the tour will involve riding in vans, with several discussion stops and one brief walk. Please wear appropriate clothing and footwear for the day's activities and consider the day's weather.

Register: This event is free, but pre-registration is required. Reserve a space by contacting Ashlee White at Ashlee.White@FreshFromFlorida.com or (850) 626-3028. **Space is limited, so register soon.** Please share this announcement with others who may be interested.



Funding for this event is provided by the USDA Forest Service via the Florida Department of Agriculture and Consumer Service's Florida Forest Service, the Florida Sustainable Forestry Initiative Implementation Committee, and International Paper.



GPS coordinates: N 30.86, W -86.833

From I-10 take exit 22 for FL-281 N toward Milton/Gulf Breeze. Head north on FL-281 N (Avalon Blvd.) for 4.9 miles to US-90 E (Caroline St.) and turn right. Go 2.3 miles and use 2 left turn lanes to turn left onto Stewart Street (at the Burger King), go 0.8 mile to County Road 191 (Munson Highway) at Milton High School and turn right. Continue on County Road 191 for 19.5 miles to FL-4 E and turn right. After 2.1 miles on FL-4 E look for the Bear Lake sign and turn left. Follow the entrance road into the facility and turn right (past the private driveway) and continue into the parking lot.