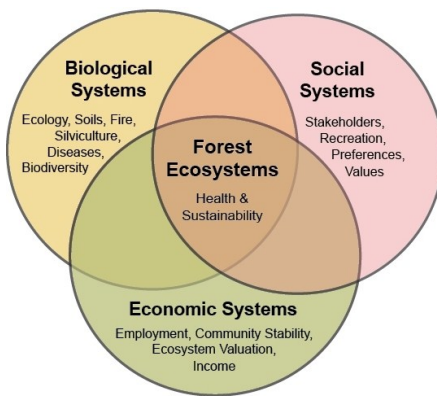


Conserved Forest Ecosystems: Outreach and Research is on the move!

Our Mission:

To develop and disseminate knowledge needed to conserve and manage Florida's forests as healthy, working ecosystems that provide social, ecological and economic benefits on a sustainable basis.

Our Goal: To facilitate integrative research and outreach activities with particular interest in public and family forests.



Need for CFEOR:

CFEOR began in 2006 with a vision that sustainability of forests and other natural areas can be ensured effectively through collaborative efforts among governmental and

non-governmental agencies, private companies, non-profit groups and universities. There is an increasing need for sustainable management of natural areas to provide ecological, economic and social benefits at a socially desirable level. Researchers and extension specialists in cooperation with CFEOR members are conducting applied research with practical management applications.

Current Signature Projects

- Flatwoods species responses to restoration treatment and season: Trajectory, success, and longevity of fire and roller chopping in fire-suppressed areas. (2011) Leda Kobziar, UF.
- Ground Cover Restoration in Flatwood Longleaf Pine Communities: Assessment of seed bank and its implications. (2011) Kimberly Bohn, UF.
- Natural Areas Training Academy (2010) Linda Demetropoulos, UF
- Developing Adaptive Management Strategies for Ecosystems in Transition. (2008-2014) Kimberly Bohn, UF.

Current Sponsored Projects

- Springs Basin Working Groups. (2010) Peter Colverson, Andrea Albertin and Ondine Wells, Pandion Inc. and Matt Cohen, University of Florida, and Florida DEP.
- Mechanical Mastication as a Fuels Treatment Method in Pine Flatwoods. (2010) Leda Kobziar, University of Florida, and USFS.
- Southern Fire Exchange: Putting Fire Science on the Ground. (2010) Leda Kobziar, University of Florida and USDA.

To learn more go to www.sfrc.ufl.edu/CFEOR

Upcoming Workshops in 2011! To register go to www.sfrc.ufl.edu/CFEOR/UpcomingEvents

- **January 20, 2011**- Tour of Green Circle Bio-Energy Plant, Cottdondale, FL.
- **February 24, 2011**- Forest Stewardship Workshop on Longleaf Pine Forest Restoration & Management, Gainesville, FL.
- **March 30, 2011** - Restoration and Management of Mallory Swamp, Mayo, FL.
- **May 2011** - Landscape-scale Mechanical Fuels Reduction Treatments Effects on Fire Behavior, Fuel Loads, and Forest Ecology, Olustee, FL.
- **November 2011** - A Symposium on Groundcover Restoration in Forests of the Southeastern US at the Natural Areas Association Annual Meeting, Tallahassee, FL.

Membership Categories and Organization

Steering Committee

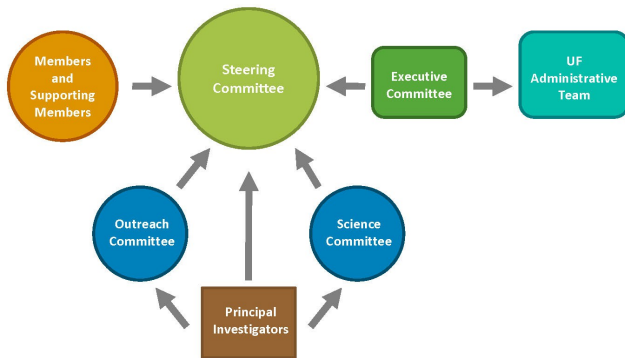
Open to land managers that own or control more than 100,000 acres of conserved forested land. The expected annual contribution is \$20,000 for membership dues and research funds.

General

Open to land managers that own or control less than 100,000 acres of conserved forested land. Annual dues are \$4,000 and the support of projects is optional.

Supporting

Reserved for select organizations or individuals that do not have the resources to participate at the membership level. Annual dues are \$1,000 and the support of projects is optional.



CFEOR Highlights!

Award Winning CFEOR Publications!

- Silver and gold award-exemplary from the 2010 Southern Region Natural Resource Extension Awards for Excellence and the 2009 USFS Regional Forester's Honor Award in the field of Technology Transfer. Both awards recognizing the CFEOR *Updates* newsletter and the CFEOR handbook on groundcover restoration.

CFEOR Handbook on Groundcover Restoration

- The complete handbook *Groundcover Restoration in Forests of the Southeastern United States* is available to download for free at the CFEOR website www.sfrc.ufl.edu/CFEOR.

CFEOR Graduate Fellowship Program

- Students in the graduate fellowship program work on research pertaining to CFEOR member interests.

Program Partners

- *Natural Areas Training Academy*
- *Florida Natural Resources Leadership Institute*
- *Florida Cooperative Extension*

Updates Newsletter

The award winning bi-weekly CFEOR *Updates* newsletter features articles about relevant issues in land management, as well as recent professional journal abstracts/articles and a list of upcoming events.

To receive this free electronic newsletter go to www.sfrc.ufl.edu/CFEOR and join our list serve!



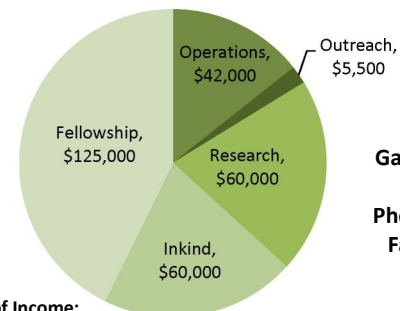
Past CFEOR workshops (2009-2010)

- **CFEOR Workshop on Groundcover Restoration**, November 18, 2010 at the Sand Hill Lakes Mitigation Bank in Greenhead, FL.
- **Uneven-aged Management and the Proportional B Method for Implementing Selection Silviculture**, June 25, 2009 at Tate's Hell State Forest in Carrabelle, FL.
- **Biomass Harvesting Demonstration**, April 30, 2009 at the Osceola National Forest in Olustee, FL.

Endorsed Projects

We have endorsed over 23 projects since 2007. View the full list at www.sfrc.ufl.edu/CFEOR

Fiscal Activity 2010-2011



Sources of Income:

Dues \$57,000
 Research \$38,000
 UF/IFAS \$70,000
 Outside Grant \$86,000

CFEOR
 PO Box 110410,
 Gainesville, FL 23611

Phone: 352-846-0546
 Fax: 352-846-1277

Contact:
 mkreye@ufl.edu