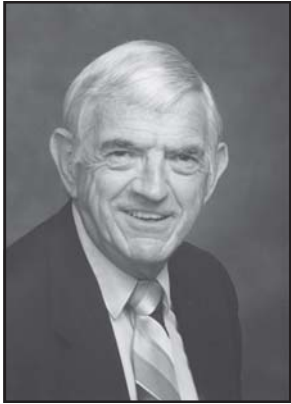




JOHN
GRAY
FUND



John L. Gray (1920-2007)

John Gray served as the third Director of the School of Forest Resources and Conservation for 14 years. His leadership kept the School in step with the University's movement toward becoming a major research institution, while

maintaining high quality programs for educating professionals to serve society's natural resource needs. John Gray initiated efforts to develop strong programs in wildlife and range sciences, fisheries, outdoor recreational resource management and cooperative research with the USDA Forest Service, as well as the USDI Fish and Wildlife Service. Dr. Gray, a graduate of Penn State, Yale and Duke, served professionally at North Carolina State University, the University of Florida and the USDA Forest Service. He continued to be in the forefront of the profession as evidenced by the 1993 Award of Appreciation from the Arkansas Society of American Foresters and the 1994 Communicator of the Year Award from the Arkansas Forestry Association. Dr. Gray was inducted as a charter member of the Arkansas Foresters Hall of Fame in 1995. He was named a SAF Fellow in 1983 and became a Golden Member in 1993. In 2003, he was inducted as an inaugural member into the Florida SAF Hall of Fame. For his many excellent services and outstanding leadership, John's friends and associates have established The John Gray Fund for Excellence in Forest Resources and Conservation to focus on issues pertaining to forests and other natural resources.

For more information
please contact:

**School of Forest Resources
and Conservation**

University of Florida
136 Newins-Ziegler Hall
PO Box 110410
Gainesville, FL 32611-0410
(352) 846-0850
E-mail: sfrc@ifas.ufl.edu

Distinguished Lecture Series

Sponsored by
The John Gray Fund
for Excellence
in Forest Resources and
Conservation

June 2, 2010

UF UNIVERSITY of
FLORIDA

Institute of Food and Agricultural Sciences



JOHN
GRAY
FUND



Carlton N. Owen

Carlton Owen is President and CEO of the U.S. Endowment for Forestry and Communities – a \$200 million entity created out of the Canada/US Softwood Lumber Agreement 2006 – with a mission to support sustainable forestry and

forest-reliant communities in the U.S. Owen, of Greenville, SC, has for nearly 35 years been at the forefront of conservation innovation. A forester and wildlife biologist, he holds a B.S. degree in forestry and M.S. in wildlife ecology from Mississippi State University. For six years he led his consultancy, The Environmental Edge, LLC, in “bringing business and the environment together” to benefit both. He is a former Executive Director of the Sustainable Forestry Board, Inc. and Vice President – Forest Policy, Champion International Corporation. He has held positions with the American Forest Council; American Forest Foundation; Potlatch Corporation; and Mississippi Wildlife Federation. Among his achievements is “Acres for America” – a first-of-its-kind program to off-set development acre-for-acre with conservation. The program linked the National Fish & Wildlife Foundation, where Mr. Owen served as Vice Chairman of the Board, with Wal-Mart in a nearly \$100 million deal where Wal-Mart made a \$35-million, ten-year commitment that has already conserved 450,000 acres in the U.S.

Program

Sponsored By

The John Gray Fund for Excellence in Forest Resources and Conservation

June 2, 2010, 9:30 am

Grand Ballroom

Paramount Plaza Hotel

2900 SW 13th Street

Gainesville, FL 32608

Speaker: Carlton N. Owen

Topic: **Natural Resources Sustainability:
Operating at the Speed of Need**